

Prime
Office
Space

OFFERED
FOR Lease
±1525 SF.
\$16 PSF.

1014 N Bragg
Blvd.

Springlake, NC
28390.



Roger Shah, CCIM.
910-578-8039
Roger@rescommre.com

Rishi Shah, CCIM.
910-977-1596
Rishi@rescommre.com

2112 Skibo Rd, Fayetteville, NC 28314.
www.rescommre.com

PROPERTY OVERVIEW

1014,1018,1022 is a free standing building with ample parking and is ±6336 square feet in size. 1526 square feet of space is available for lease for \$16 psf.

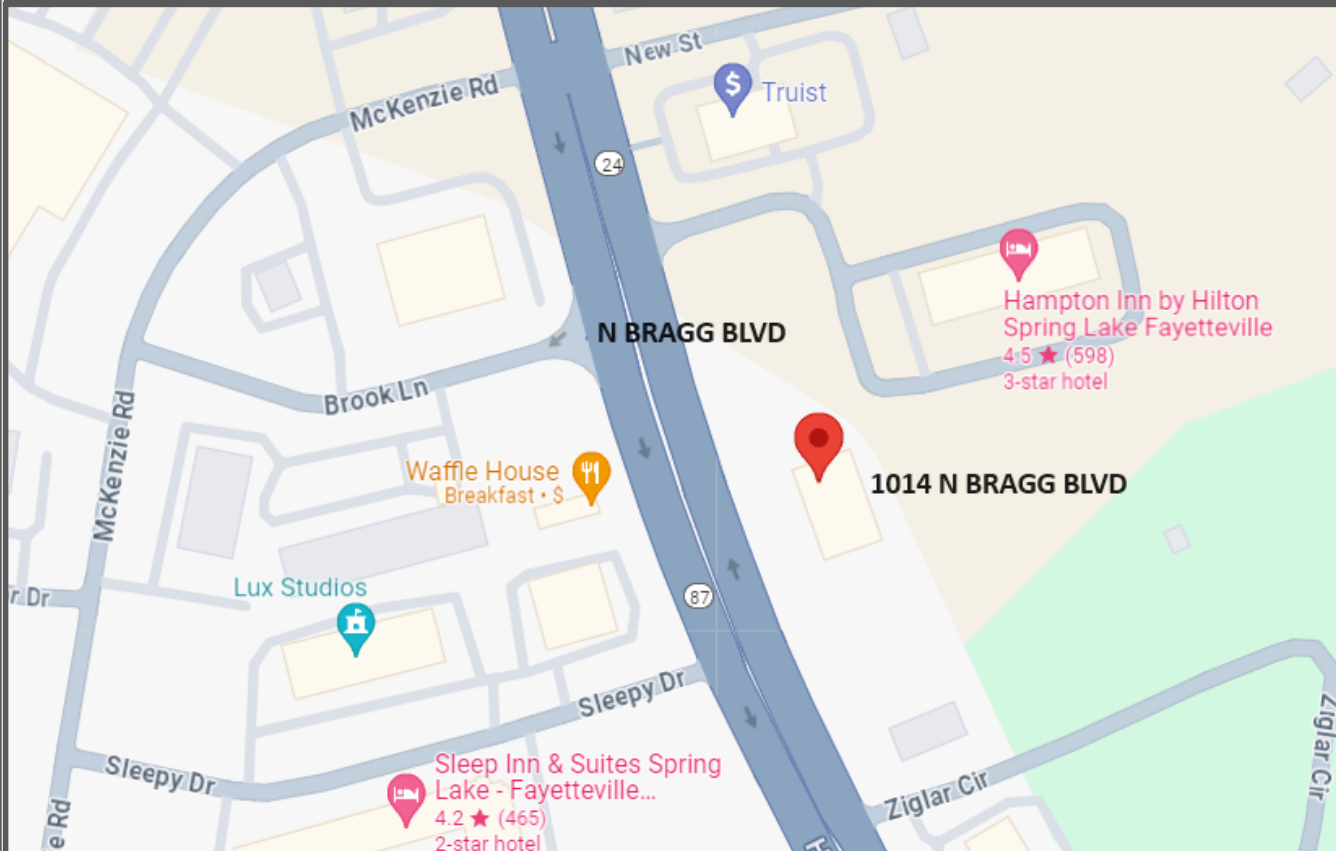
Other tenants are KIDZCARE PEDI-ATRICS and SPEECH THERAPIST.

Space features waiting area, reception, 6 private offices, file room, break area, storage room and restroom. Ideal for any medical related use or any other office use.

Surrounded by hotels, restaurants and numerous other businesses.

High visibility from HWY.

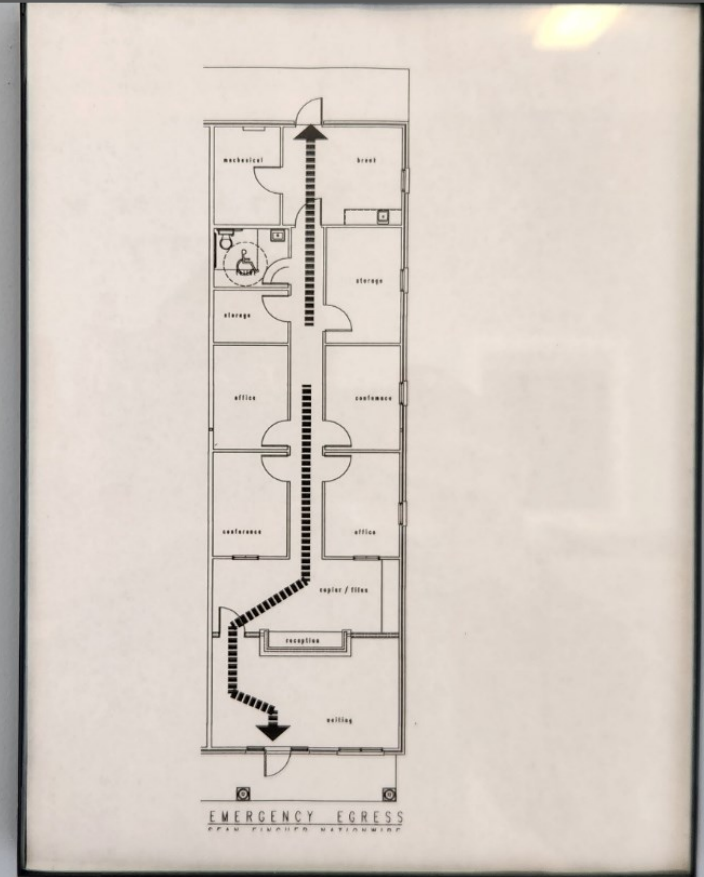
Address	1014 N Bragg Blvd, Srpinglake, NC 28390
Lease Price	\$16 PSF
Total available space	1526 SF (cannot be subdivided)
Cumberland County NC PIN No.	Portion of 0501-59-9956
Location	Springlake. Busy HWY.
Use	Medical or any Health care or office.



Roger Shah, CCIM.
910-578-8039
Roger@rescommre.com

Rishi Shah, CCIM.
910-977-1596
Rishi@rescommre.com

2112 Skibo Rd, Fayetteville, NC 28314.
www.rescommre.com



Spring Lake, NC: is located in northwest Cumberland County, North Carolina. It is bordered to the south by city of Fayetteville, to the west by Hoke and Moore counties, and to the north by Harnett county. A large portion of the town limits are occupied by pope Airforce base and Fort Liberty.



Roger Shah, CCIM.
910-578-8039
Roger@rescommre.com

Rishi Shah, CCIM.
910-977-1596
Rishi@rescommre.com

2112 Skibo Rd, Fayetteville, NC 28314.
www.rescommre.com



Roger Shah, CCIM.
910-578-8039
Roger@rescommre.com

Rishi Shah, CCIM.
910-977-1596
Rishi@rescommre.com

2112 Skibo Rd, Fayetteville, NC 28314.
www.rescommre.com

±1526 sf

